



Learning & Development Solutions for Specialty Chemicals



Who is Systran?



Founded 1981



Learning &
Development
Solutions



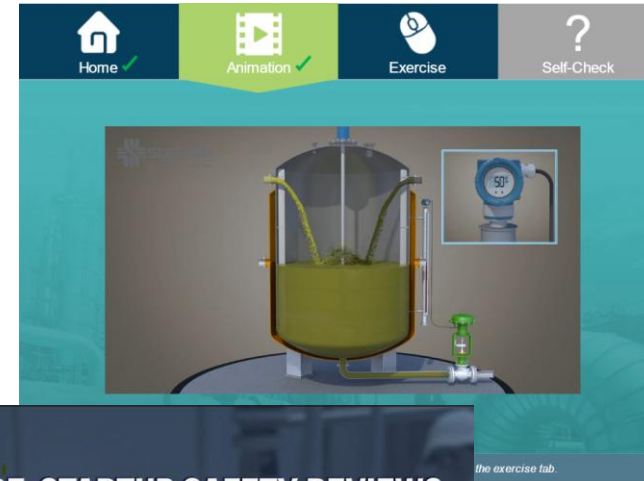
Energy, Chemicals,
Refining Focused

Working with SOCMA



**ChemOps
Training**

Engage higher performance.



- COMPLETE PRE-STARTUP SAFETY REVIEWS
- FOLLOW PROCEDURES
- BRING UNITS ONLINE ONE AT A TIME

Services



**Training Needs
Assessment**



**Custom Content
Development**



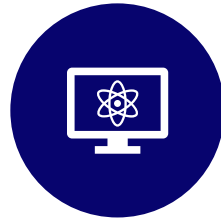
**Training System
Implementation**



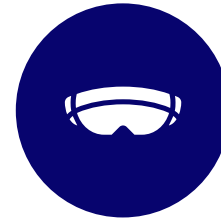
E-Learning



**Hands-On
Trainers**



**Operations
Training
Simulators**



**Virtual &
Augmented
Reality Training
Tools**



**Industrial
Incident
Animations**

Training Challenges



Address Knowledge and Skill Gaps



Optimize Training Effectiveness



Improve Operator Performance

Solutions in Focus

Knowledge & Skills:

Process Technology for zSpace



The screenshot shows the Systran 1.0.0.0 software interface. On the left, there is a search bar and a list of models including: Air Cooler, Centrifugal Pump, Continuous Stirred Tank, Cooling Tower, Diaphragm Type PD Pump, Double-Pipe Heat Exchanger, Filter, Flame Arrestor, Flare Stack, Floating Roof Tank, Gate Valve, Gear Type PD Pump, Globe Valve, Heat Exchanger, Needle Valve, Plug Valve, Plunger Type PD Pump, Pneumatic Control Valve, Pressure Relief Valve, Pressurized Storage Sphere, Rupture Disc, Steam Trap, Swing Check Valve, Thermosyphon Reboiler, and Variable Speed Electric Motor. The main area displays a 3D model of a blue centrifugal pump. On the right, there is a text description: "A centrifugal pump is a mechanical device that uses rotating impellers to increase the velocity of fluid and create a flow. It converts rotational energy from a motor or engine into fluid motion, generating pressure that moves the fluid through a system."

Solutions in Focus: Process Technology for zSpace



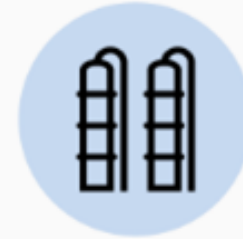
Core

Basic process equipment found in many industrial processes. Includes Valves, pumps, and exchangers.



Core+

More complex equipment including boilers, furnaces, and instrumentation. Introduces basic distillation and simple reactors.



Chemical & Refining

From fractionation columns to fixed bed reactors, this collection introduces processes and equipment found in chemical plants and refineries.



Oil & Gas

Exploration and production equipment common to the oil and gas industry introduces crude oil wells, separators are included in this collection.

Optimize Training
Effectiveness:

Training Needs Assessment



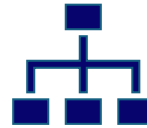
Solutions in Focus: Training Needs Assessment



**Knowledge and
skill gaps**



**Delivering
Results**



**Aligned to
Organization**



**Compliance
Requirements**

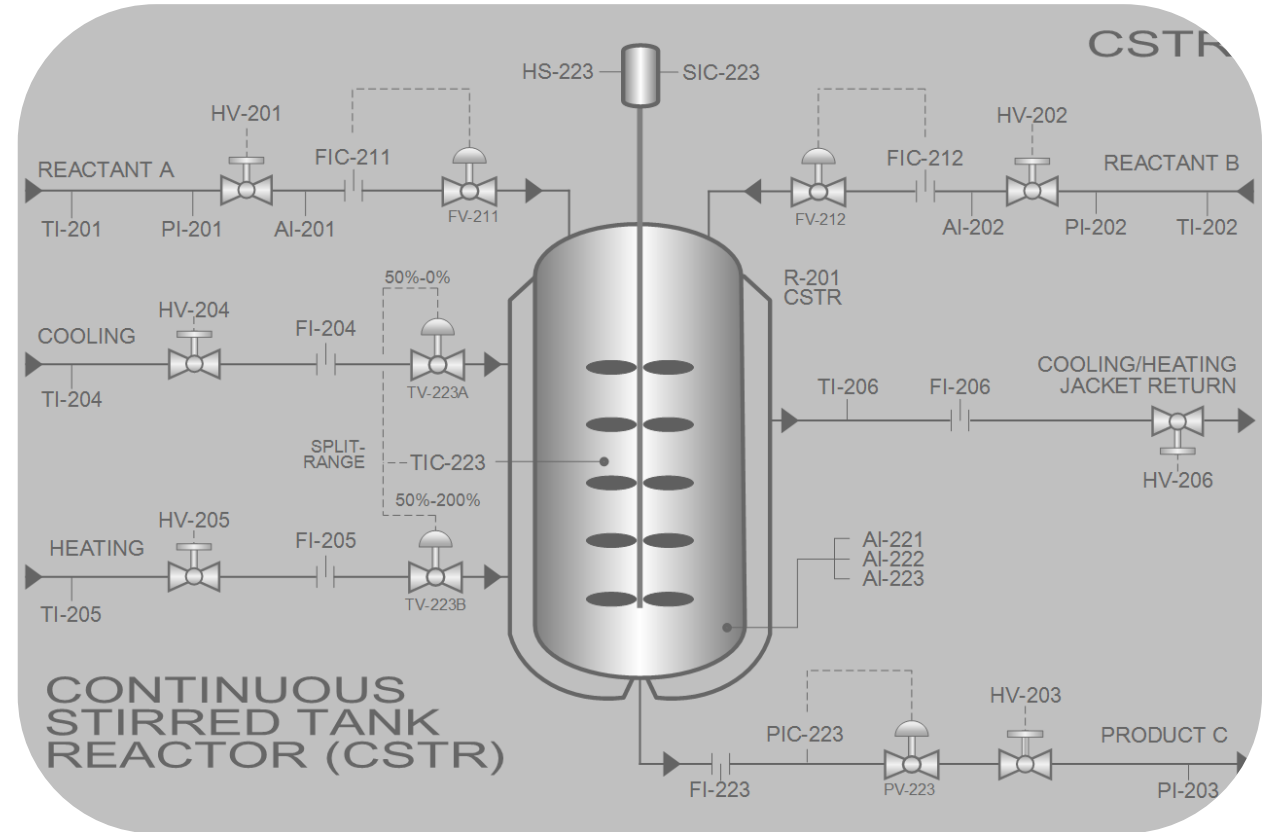


**Optimized
Time/\$**

Solutions in Focus

Performance &
Efficiency:

Operator Training Simulators



Solutions in Focus: Operator Training Simulators

Operator Competencies

Selective Attention

Problem Recognition

Multi-Tasking/
Prioritization

Deductive Reasoning

Resistance to
Premature
Judgement

Speed of Closure

Decision
Making/Response
orientation

Process
Knowledge

Stress
Management

Solutions in Focus: Operator Training Simulators

Behavioral Observation Measures

- Uses procedures
- Maintains situational awareness
- Communicates effectively
- Uses trends
- Takes measured, thoughtful moves
- Responds to alarms

Thank You

Contact Us

281.480.8004 | dhirsch@systraninc.com | systraninc.com

1331 Gemini St | Suite 125 | Houston, Texas 77058